

Data Sheet STR-750

Square to Round Duct Former

International Patent Pending. Patent No: (1303873.2).UK Patent. Patent No: (1115991.0).



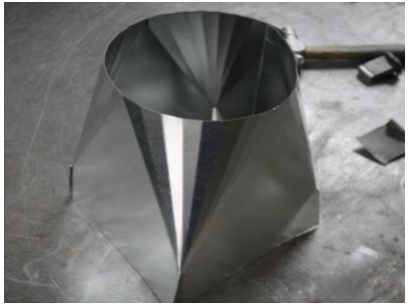
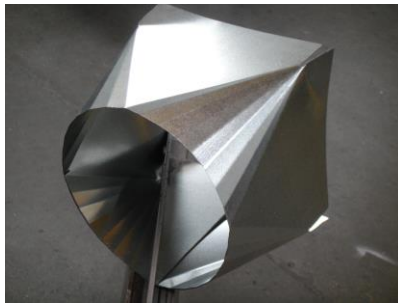
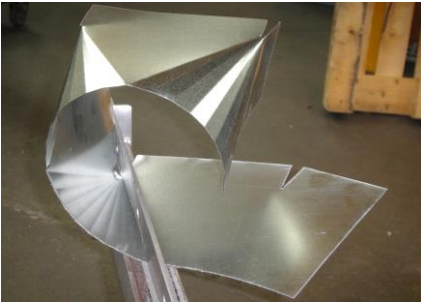
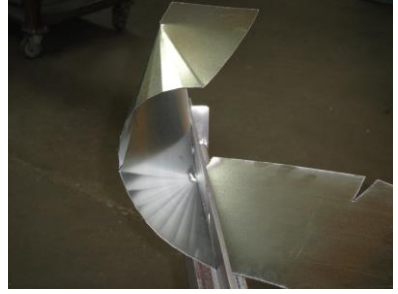
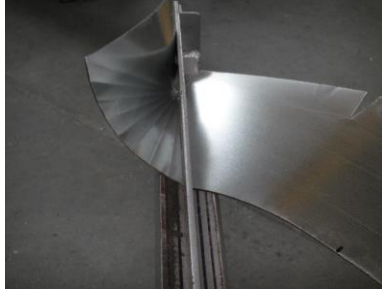
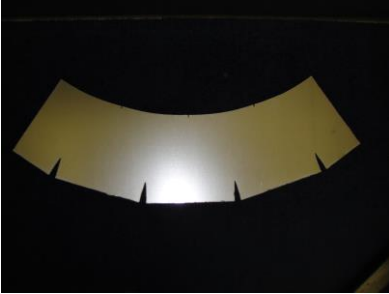
The STR-750, Square to Round Duct Former from Firmac has revolutionised square to round duct forming. Duct fittings can be made quickly and easily, ensuring production in other areas is not halted or slowed down and your main folding machine is free for other work. This compact and versatile machine will form a duct fitting in less than two minutes from one piece of metal, with only one join. No reshaping is required.

- Square to round duct fittings can be formed in less than two minutes (some pieces can be formed in 45 seconds)
- Duct fittings can also be made in one complete piece with only one join to make, helping reduce production time and also maintaining its shape
- Compact and mobile. Ideal for use on site
- Quick and easy to use with pneumatic foot operation keeping both hands free to move material quickly through the machine
- Offsetting patterns just as easy to make
- Forms flat oval shapes if required

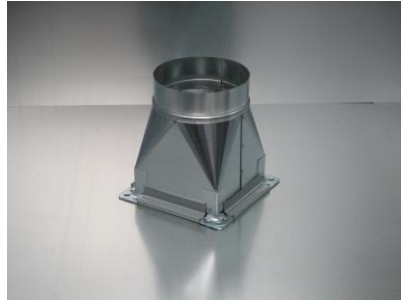
Specification

| | |
|--------------------|---|
| Gauge | 0.6-1.2mm (European)/ up to 18 gauge metal thickness (US) |
| Machine Dimensions | 1050mm (w) x 620mm (d) x 1100mm (h) |
| Compact size | Folds neatly away when not in use |
| Weight | 80 Kg |
| Air Requirement | 6 to 7 bar clean and dry |
| Pattern | The maximum creasing length of the Square to Round pattern is 750mm Capable of making offset pieces as well as symmetrical Square to Round |
| Diameter | Minimum diameter is 100mm |
| Colour | Grey and blue |
| Operation | Pneumatic foot operation |
| Language | English |
| Shipping Details | Shipped in a "Steel Crate". Dimensions: 1110mm (w) x 600mm (d) x 230mm (h) x 110kg |

Quick and easy to use



Range of shapes and sizes



Asymmetric / Offsets

